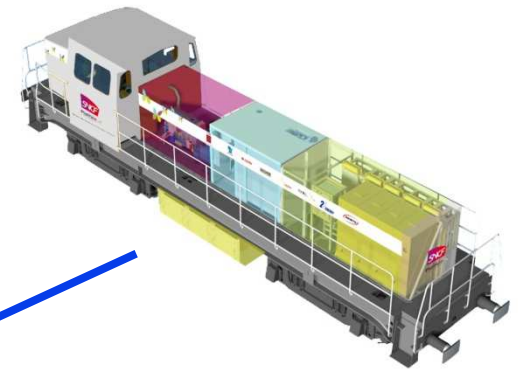
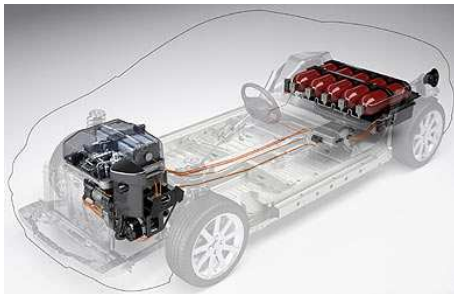




# *SOPRANO*





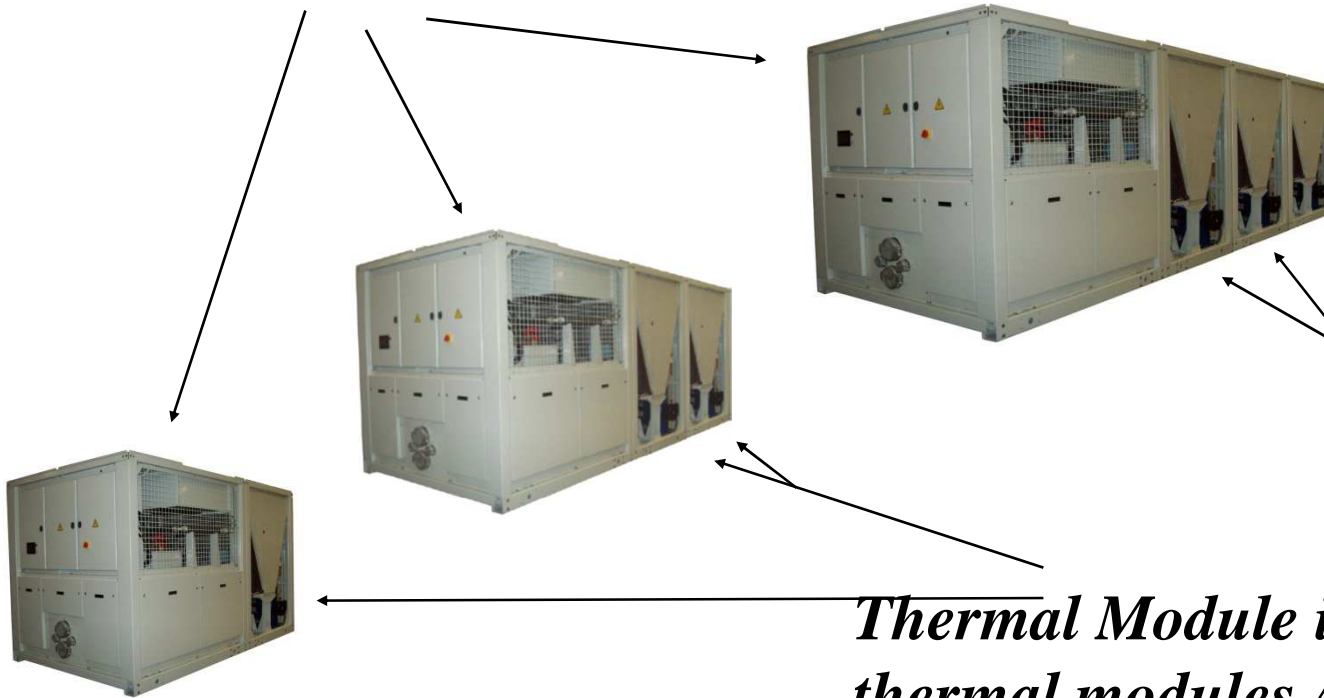
# **ENERGYes**

## **Division**

# EnerTermoPac lines

*Cogeneration modules:*

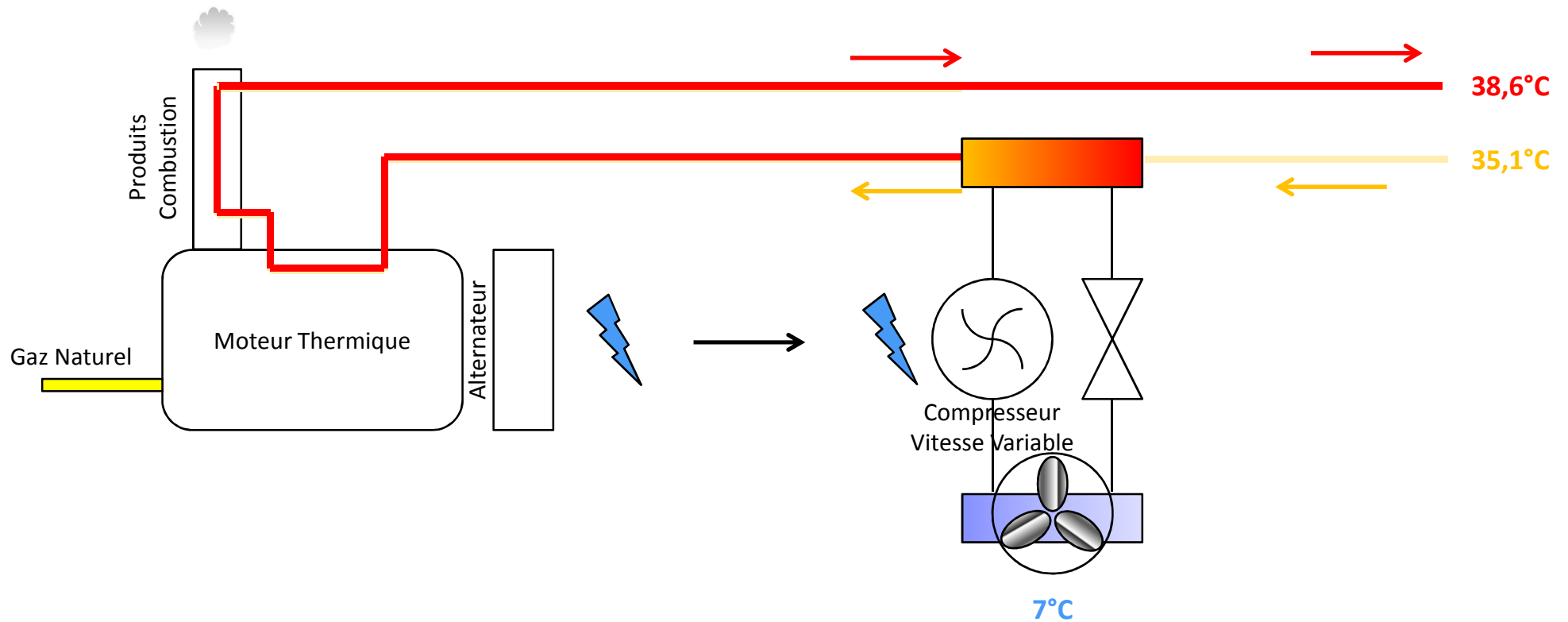
*1 or 2 power generator*



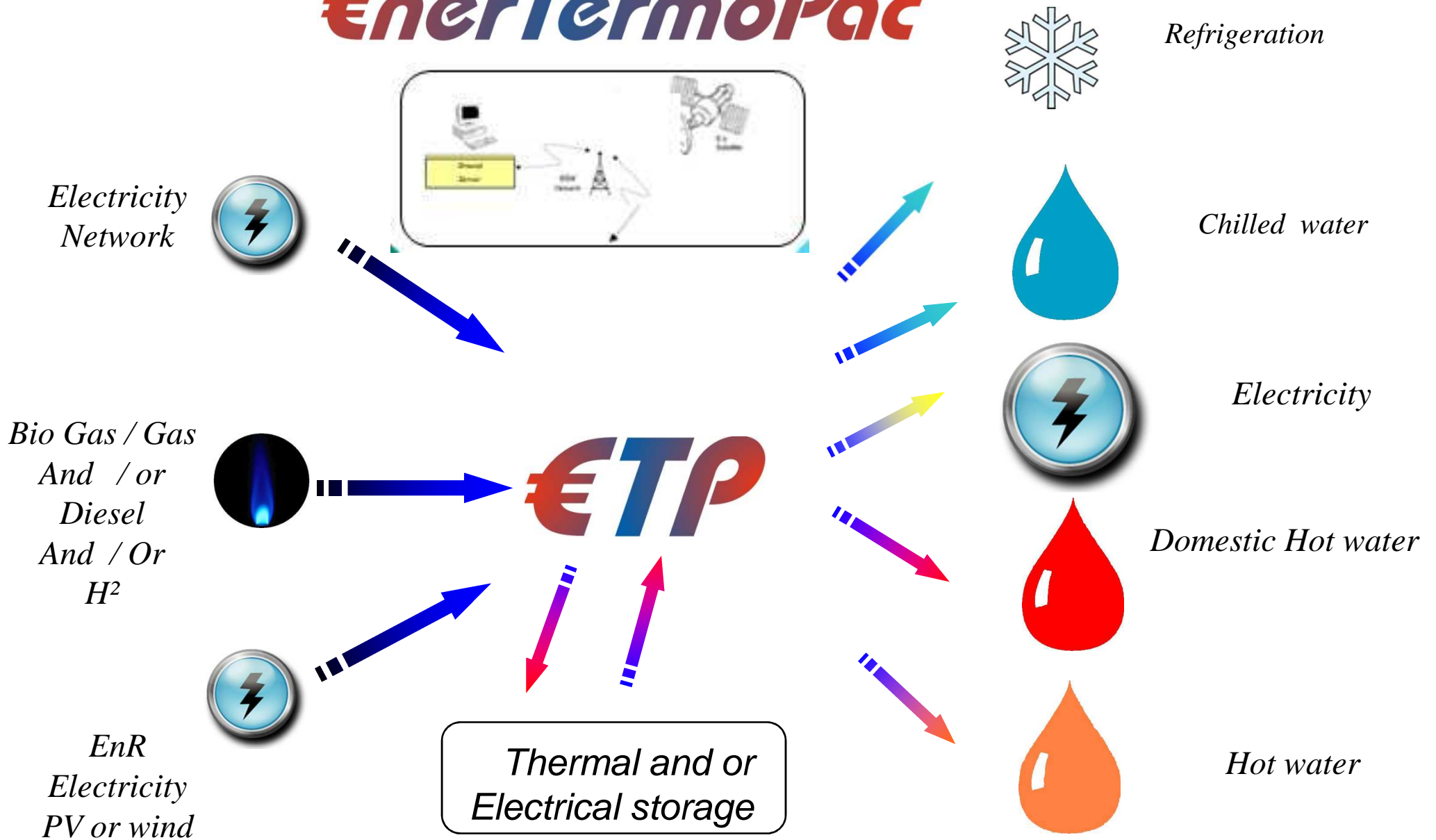
*Thermal Module inverter Heat pump &  
thermal modules Air Cooled or water  
Cooled*

**MADE IN EC**

# EnerTermoPac



# €nerTermoPac



# *EnerTermoPac*

- ETP lines
  - Industrial or large capacity applications
    - ➔ ETP 100 to 1000 KW
    - ➔ 2 to 7 liters engines
  - Comfort line medium applications
    - ➔ Mini ETP 50 to 100 KW
    - ➔ 2 liter engines
  - Residential
    - ➔ Micro ETP 10 to 40 KW (under development)
    - ➔ Reformer + Fuel cells



---

**ENERGYes** Division

 **SOPRANO**

# Mini ETP



# Mini ETP



# €nerTermoPac

# €TP

*ETP Efficiency with traditional technology : 1,6 to 2,4 on primary energy vs 0,85 to 1,05 on boilers*



***A new génération Product: :***

*The optimum energy source is selected based on its yearly or seasonal cost*

*Biogas - gas or electricity for domestic hot water , hot water chilled water and electricity.*

*L' €TP from 100 to 1000 kW*

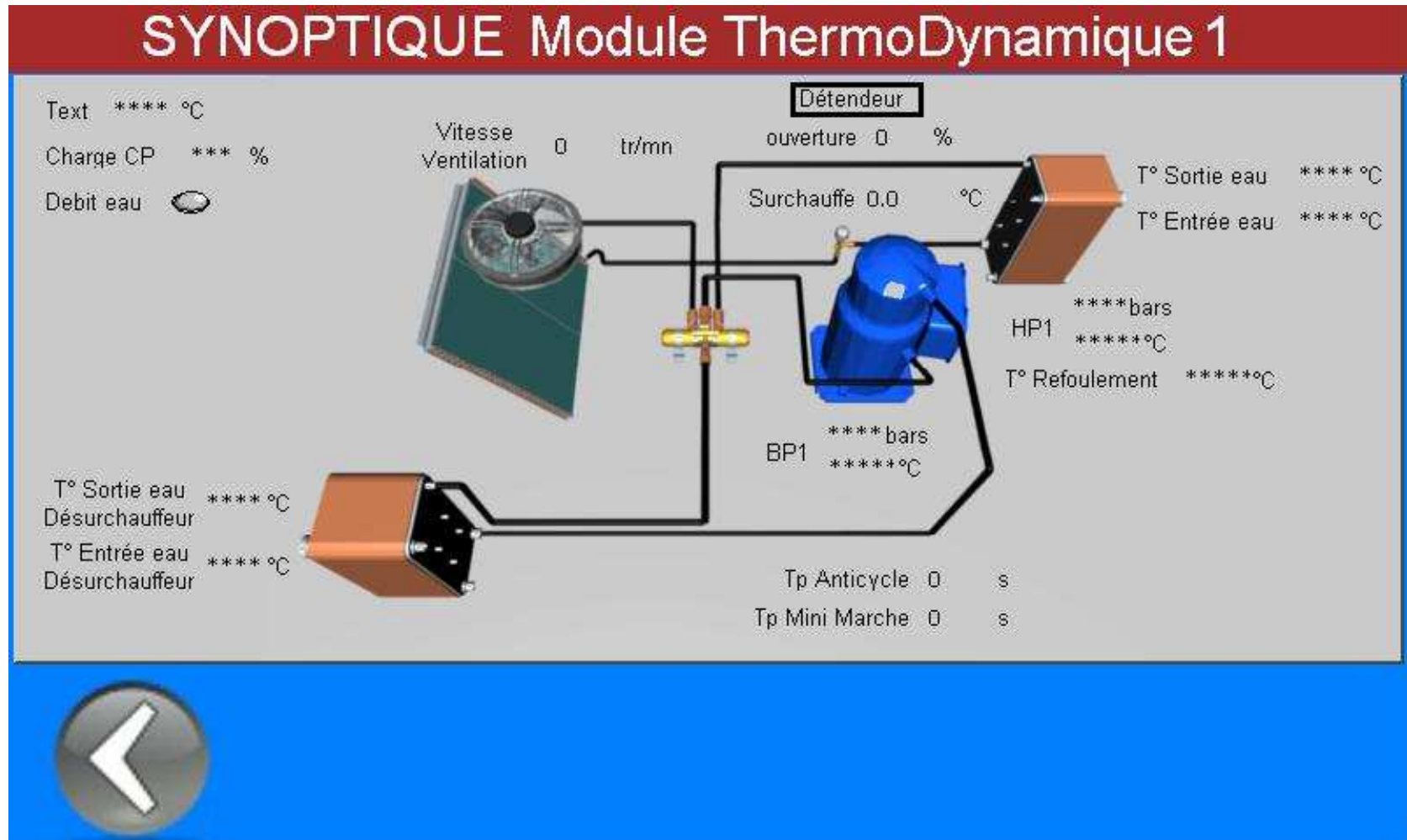
***Worldwide patents***

**ENERGYes** Division

**SOPRANO**



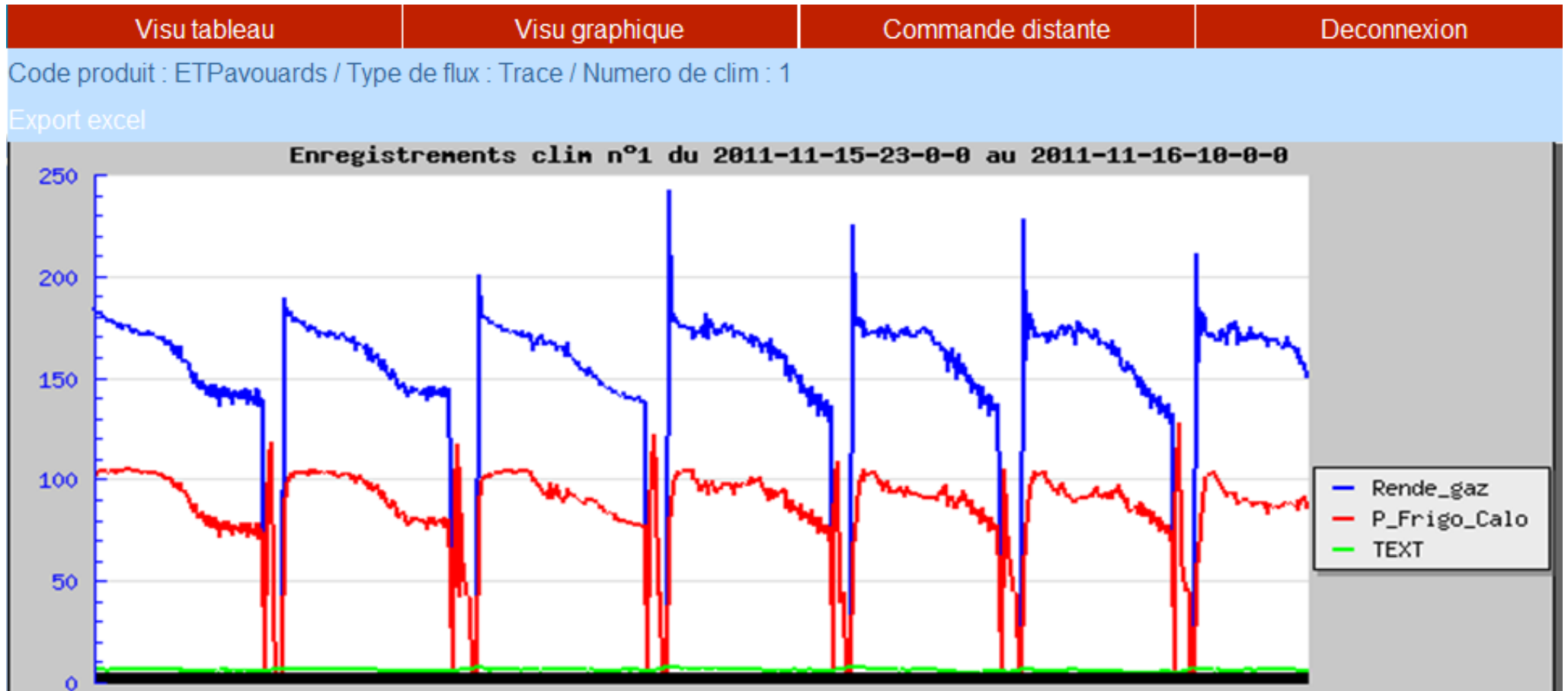
# I H M



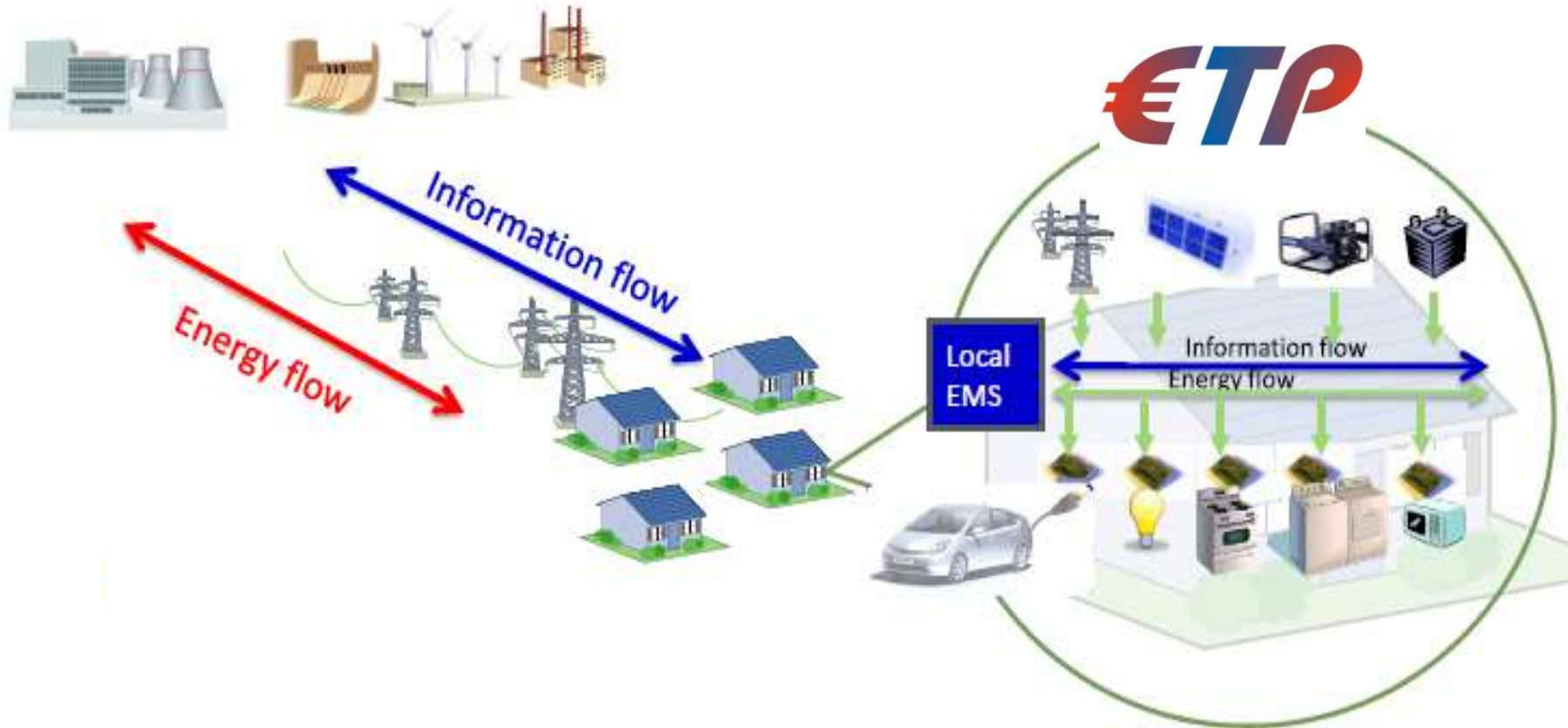
MADE IN FRANCE

# Télé control

- Efficiency Gas / Thermal capacity / T° ext



# SMART GRID



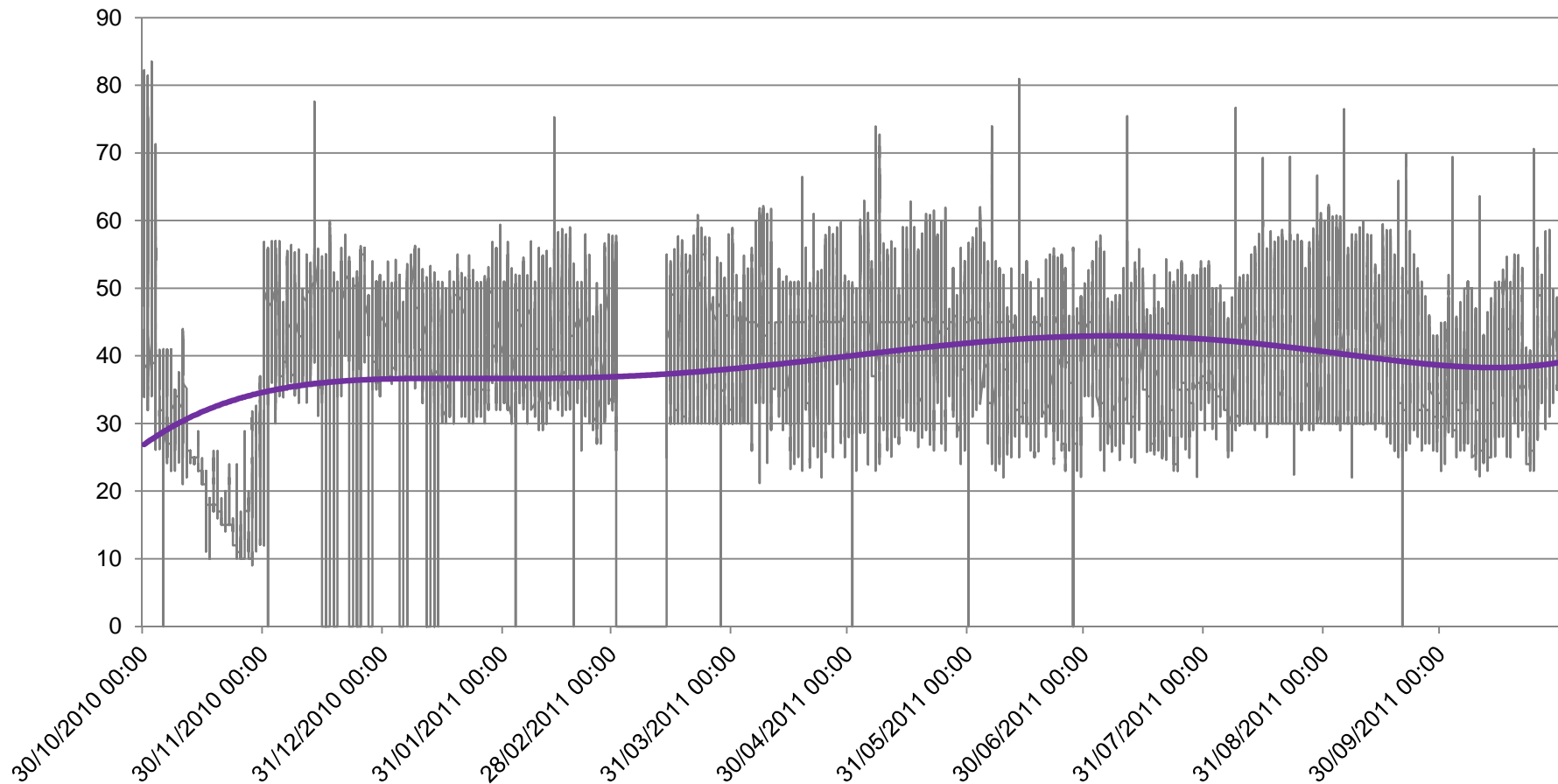
**ENERGYes**

**ENERGYes** Division

 **SOPRANO**

# Average temperature over one year

- Départ le plus élevé de tous les compartiments
  - Moyenne = 38,6°C



## Contact



- **Moreau Christian**
  - Tel : +33 474 822 793
  - [cmoreau@soprano.fr](mailto:cmoreau@soprano.fr)
- **Thank you**

